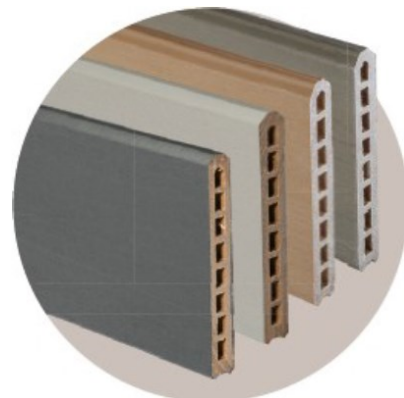


Technical data sheet

Atmosphere fencing boards

TECHNICAL CHARACTERISTICS

Composition	Approx. 2/3 PEFC wood and 1/3 polyethylene (excl. additives)
Surface finish	1 embossed side, 1 smooth side
Unit weight	4.28 kg (+/- 5%)
Thickness	21 mm
Dimensions in mm (th. x w x L)	21 x 150 x 1783
Stacked working dimensions in mm (th. x w x L)	21 x 146 x 1783
Tolerances	Width and thickness: +/- 2 mm ; Length: +/- 5 mm
Height can be	up to 1.80 m
Compatibility	Compatible with all aluminium design panels and accessories
Warranty	25 years* - Winds up to 100 km/h



PROPERTIES

Properties	Results	Standards
VOC emission	Low: A+ rating, non-toxic boards. Ideal for use in nurseries, suitable for children of all ages	EN 71-3 / ISO 16000
Moisture resistance	After immersion for 24 hours: Swelling: 0.4% Weight gain: 1.4%	EN 317
Fungal resistance	DC1 rating (very long-lasting)	EN 350
Termite resistance	"Long-lasting" rating	EN 350
Tensile strength	Fm > 23.6 Mpa	EN 15534 / EN 310
Coefficient of thermal expansion	$\alpha L < 29 \times 10^{-6} \text{ }^{\circ}\text{C}^{-1}$	EN 15534-4

+ POINTS

A permanent colour, resistant
to shade variations
No temporary bronzing
Stain-resistant
Easy maintenance

WIND-RESISTANT

Can be installed up to a height of 1.8 m above
the ground if embedded, or on double-shell post
supports
Wind-resistant up to 100 km/h

INSTALLATION CONDITIONS

Embedding the posts:

- Hole depth: At least 500 mm
- Hole diameter: Min. 300 mm
- Post height above ground: Max. 1815 mm

Atmosphere boards:

- Suited to installation on a low wall
- Wood composite boards can be combined on the same panel with aluminium boards, using halfway support rails

On post supports:

- Post height above ground: Max. 1845 mm

Post spacing interval: 1800 mm

Gap to maintain between the post cover and top rail: min. 15

LOGISTICAL INFORMATION

On pallets L=1783 mm	Quantity	working m ²	Net weight
Atmosphere board 150 mm	245	66	1 049 kg



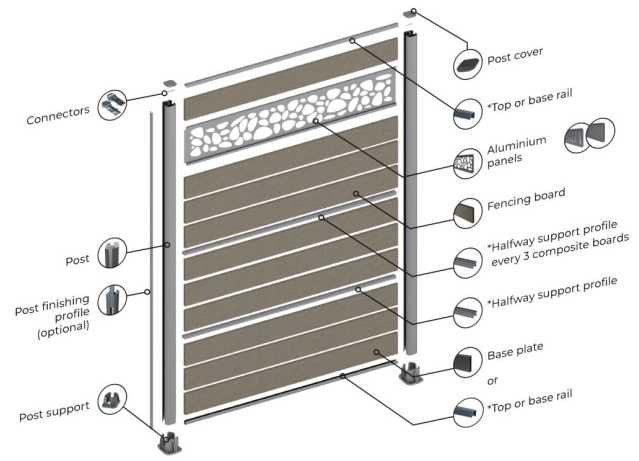
*warranty terms
can be downloaded from

Quote assistance: see configurator on
[Silvadec.com](https://www.silvadec.com).



FENCING BOARDS

	Atmosphere fencing boards 1 smooth side		Atmosphere fencing boards 1 embossed side, 1 smooth side	
Colours				
	Sun Brown	Wild Grey	Anthracite grey	Light grey
Ref.	B0040	B0041	SICLOT1404	SICLOT1403



* For aluminium, smooth boards are optional.

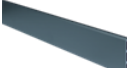


FENCING DESIGN KITS


Aluminium fencing design kits Horizontal Sanded finish		 Plant design kit 321 x 1783	 Mineral design kit 321 x 1783	 Urban design kit 321 x 1783	Aluminium fencing design kits Vertical Sanded finish		 Plant design kit 845x1791	 Mineral design kit 845x1791	Other design kit	
Anthracite grey	Ref.	SIDCOR1608	SIDCOR1604	SIDCOR1612	Ref.	C0041	C0039			 Botanical panel 800 x 1800
Metal grey	Ref.	SIDCOR1606	SIDCOR1602	SIDCOR1610	Ref.	C0042	C0040			
Black	Ref.	C0051	C0049	-	Ref.	C0142	C0141			
									Ref.	SIDCOR1616

Aluminium design kits: heights equivalent to 2 stacked fencing boards. Inserted at any height on the fencing. Easily insertable between 2 boards.

FENCING ACCESSORIES

Fencing accessories Sanded finish		 3-in-1 high-wind post 1260 mm	 3-in-1 high-wind post 2315 mm	 Double-shell post support	 Post cover	 Wall-fixed half-post 1845 mm	 Semi-cover for wall-fixed post	 Top or bottom rail 26x30x1736 mm	 Halfway support rail 1736 mm
Anthracite grey	Ref.	SIPOT1405	SIPOT1406	SIPLAT1402	SICHAP1402	SIPOT1801	SICHAP1801	SILISHB1901	SILISINT1402
Metal grey	Ref.	SIPOT1403	SIPOT1404	SIPLAT1401	SICHAP1401	SIPOT1802	SICHAP1802	SILISHB1902	SILISINT1401
Black	Ref.	C0060	C0061	C0059	C0048	C0053	C0052	C0056	C0057

Fencing accessories Sanded finish		 Base plate 1797 mm	 Post finishing profile 27x9.5x1845 mm	 Dividers (x 22)
Anthracite grey	Ref.	SICLOT1422	SIPOT1408	SIENT1801
Metal grey	Ref.	SICLOT1421	SIPOT1407	SIENT2002
Black	Ref.	C0058	C0047	C0054

Other accessories	
	 Top/bottom rail connectors kit (x 2)
Ref.	SILISCO1301

Aluminium door Sanded finish		 Door structure 1000x1682 mm	 Aluminium door post 100x100x2315 mm
Anthracite grey	Ref.	SIPORT1901	SIPORTPOT1901



Practical information

- Installation instructions for composite fencing (ref. PU11)



- Maintenance advice

