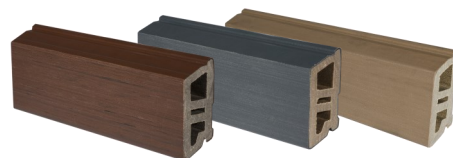


Technical data sheet

Atmosphere open rhombus cladding board

TECHNICAL CHARACTERISTICS

Composition	Approx. 2/3 PEFC wood and 1/3 polyethylene (excl. additives)
Board finish	Co-extruded composite open rhombus board
Surface density	21 kg/m ²
Linear density	1.8 kg/m
Composite board dimensions in mm (th. x w x L)	30 x 87 x 3600 Custom lengths available on special order, from 1 to 4 m
Tolerances	Width and thickness: +/- 2 mm ; Length: +/- 5 mm
Warranty	25 years* - Winds up to 100 km/h



PROPERTIES

Properties	Results	Standards
Environmental Product Declaration (EPD)	Registration number: 3-171:2019 First manufacturer to have drawn one up, in 2019, for our composite deck boards. Carbon footprint emitted (13.2 kg of CO ₂ per functional unit) approximately twice as less compared to other composites of German origin and 4 times less than exterior ceramic facings.	NF EN ISO 14025, NF EN 15804+A1 and NF EN 15804/CN
VOC emission	Low: A+ rating, non-toxic boards. Ideal for use in nurseries, suitable for children of all ages	EN 71-3 / ISO 16000
Moisture resistance	After immersion for 24 hours: Swelling: 0.4% Weight gain: 1.4%	EN 317
Fungal resistance	DC1 rating (very long-lasting)	EN 350
Termite resistance	"Long-lasting" rating	EN 350
Use rating	Use rating 4: EXTERIOR wood in contact with the ground or fresh water	EN 335
Wind resistance	V4 rating Up to a height of 30 m	CSTB 2929 NV65**
Fire reaction	E rating	EN 13501-1
Coefficient of thermal expansion	$\alpha L < 29 \times 10^{-6} \cdot ^\circ C^{-1}$	EN 15534-4

** for cladding in mainland France (zones I, II, III), and the French Overseas Regions and Territories (IV)

INSTALLATION CONDITIONS

Cleats:

- **Interval between cleats:** Max. 400 mm
- **Cleat durability:** min. use class 3b
- **Thickness:** min. 27 mm - **Width:** min. 40 mm

Profiles:

- **Profile overhang:** Max. 50 mm
- **Width and length expansion:**
 - **between two profiles:** min. 5 mm
 - **between a profile and a wall:** min. 5 mm

For installation with visible buttings: cleats and clips must be doubled up on each profile end

Cladding base: Min. 200 mm between ground and the first board. Installing an anti-rodent grille recommended

LAYOUT

For 1 m² of façade with a 15 mm gap, use:

- **12 linear** metres of open rhombus boards
- **3 linear** metres of cleats
- **28** clips + screws

LOGISTICAL INFORMATION

On pallets L = 3600 mm	Quantity	working m ²	Net weight
70 mm boards	105	31,5	662 kg

+ POINTS

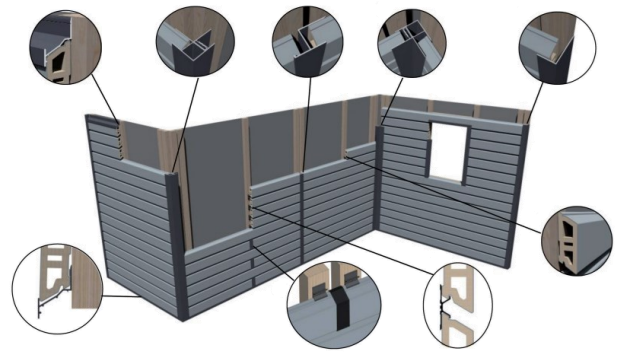
Easy maintenance
No treatment required
Permanent and uniform colour
25-year warranty*



*warranty terms can be downloaded from www.silvadec.com

Quote assistance: see configurator on Silvadec.com





OPEN RHOMBUS BOARDS

Brushed finish 1 side				
		Anthracite grey	Dark brown	Light brown
Cladding board 30 x 70 x 3600 mm	Ref.	SIBARLAM1301L3.6	SIBARLAM1303L3.6	SIBARLAM1305L3.6
	EAN code	3760102975985	3760102975688	3760102975916
Cladding board 30 x 70 by metre	Ref.	SIBARLAM1301	SIBARLAM1303	SIBARLAM1305
	EAN code	3760102975985	3760102975688	3760102975916

CLADDING ACCESSORIES

Cladding accessories Powder-coated aluminium finish, Qualicoat® certified				
		Anthracite grey	Dark brown	Light brown
Start and end profile 34 x 52.5 x 3600 mm 	Ref.	SIBARPDF1301	SIBARPDF1303	SIBARPDF1305
	EAN code	3760102975992	3760102975725	3760102975923
Corner profile 34 x 62.5 x 3600 mm 	Ref.	SIBARPCOR1301	SIBARPCOR1303	SIBARPCOR1305
	EAN code	3760102976043	3760102975848	3760102975961
Inward/outward facing corner profile 89 x 89 x 3600 mm 	Ref.	SIBARPANG1301	SIBARPANG1303	SIBARPANG1305
	EAN code	3760102976036	3760102975817	3760102975954
Butting profile 33 x 66 x 3600 mm 	Ref.	SIBARPAB1301	SIBARPAB1303	SIBARPAB1305
	EAN code	3760102976005	3760102975756	3760102975930
Joint cover 30 x 87 x 35 mm 	Ref.	SIBARCJ1501	SIBARCJ1504	SIBARCJ1503
	EAN code	3760102977712	3760102977743	3760102977736

Other accessories	 Black anodised aluminium clips (x 140 + screws)	 Installation jig 50 x 166 x 26 mm
Ref.	SIBARCLIP1301	SIBARGAB1401
EAN code	3760102976050	3760102976432

Compatible:

- HQE certified worksites
- External thermal insulation
- Façade renovation

AN ENVIRONMENTALLY FRIENDLY 100% RECYCLABLE PRODUCT*

*on our production site

Practical information

- Installation instructions for open rhombus cladding (ref. PU29)



- Maintenance advice

