



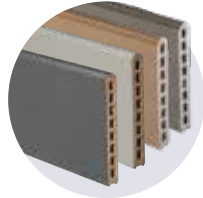
# silvadek

Life is composite

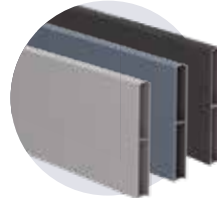


## Our maintenance advice for fencing boards

Atmosphere board



Aluminium board



It is essential to wash fencing once a year, ideally in spring, using soapy water, which should be warm for optimum effectiveness.

We strongly advise using an Atmosphere brush. Brush in the direction of the board.

For aluminium fencing, we recommend using a sponge, as some brushes can cause scratches.

### WHAT TO DO IN THE EVENT OF...

Type of mark	Cause	Action(s) to take
<b>MINERAL DUST</b> (Chalk)	<b>Dusty environment (stone, chalky ground)</b>	If cleaning with a sodium bicarbonate laundry detergent is not completely effective, use a bathroom descaler. Test beforehand on a small area, leave to work, scrub with a long-handled broom and rinse with plenty of water.
<b>MOSS / LICHEN</b>	<b>Inadequate maintenance of the boards creates an environment very conducive to moss developing</b>	Use Silvaction. If you use an antifoaming product (without bleach), test the product on an inconspicuous area before use.  In all cases, refer to the product's instruction for use and following the safety precautions.

### > OUR CLEANING PRODUCT



#### SILVACTION

- Ready for use, without rinsing
- Capacity: 5 l (20/25 m<sup>2</sup>)
- Ideal for heavy one-off "scrubbing" actions

Ref. SINET1801

#### THINGS YOU SHOULD NEVER DO

- Do not use high-pressure cleaning equipment, which makes the surface slightly porous and so more prone to staining
- Do not use solvent
- Do not apply staining oil, paint or protective/restorer products.



Ref.: FE07EN - \*Warranty terms can be downloaded from the website silvadek.com



**silvadek**  
Life is composite

Silvadek Germany  
Ludwig-Erhard-Straße 3 · D - 84069 Schierling  
Tel.: +49 9451 9443 500  
e-mail: info-germany@silvadek.com

Silvadek France  
21 Parc d'Activités de l'Estuaire · F - 56190 Arzal  
Tel. +33 (0)2 97 45 09 00  
e-mail: info@silvadek.com

